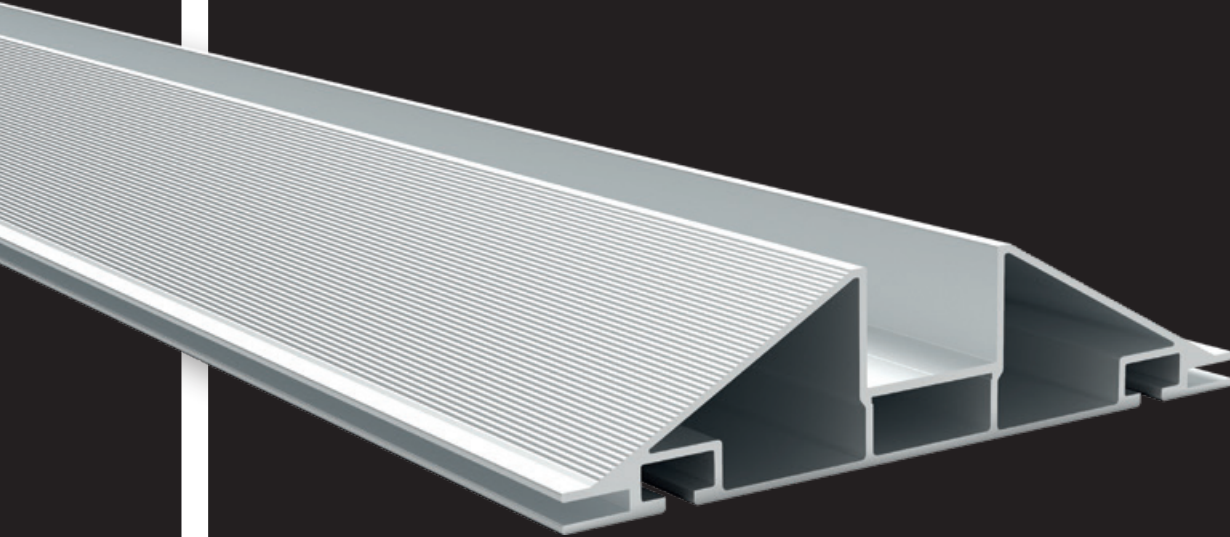


**PRICE LIST 20/21**



**SYSTEM 170**

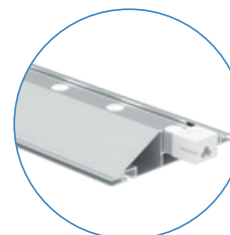
## BACKLIT FRAMES

### ALUMINIUM FRAMES INCL. LED LIGHTING

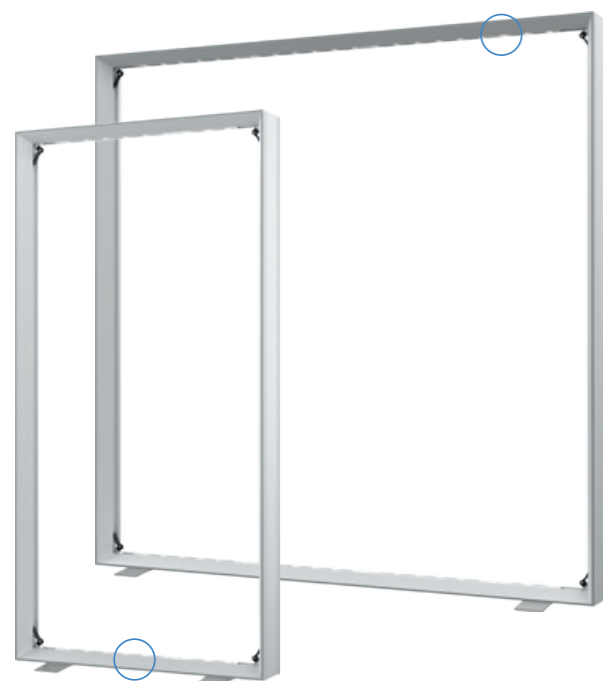
DIMENSIONS (W x H)	EASY CORNECT®		EASY CORNECT® PLUS	
	ITEM NUMBER	PRICE	ITEM NUMBER	PRICE
980 x 1960 mm	CR-17V-98x196	659,00 €	CR-17P-98x196	699,00 €
1470 x 1960 mm	CR-17V-147x196	809,00 €	CR-17P-147x196	849,00 €
1960 x 1960 mm	CR-17V-196x196	919,00 €	CR-17P-196x196	959,00 €
2450 x 1960 mm	CR-17V-245x196	959,00 €	CR-17P-245x196	999,00 €
980 x 2450 mm	CR-17V-98x245	819,00 €	CR-17P-98x245	859,00 €
1470 x 2450 mm	CR-17V-147x245	959,00 €	CR-17P-147x245	999,00 €
1960 x 2450 mm	CR-17V-196x245	1.059,00 €	CR-17P-196x245	1.099,00 €
2450 x 2450 mm	CR-17V-245x245	1.119,00 €	CR-17P-245x245	1.159,00 €

### ALUMINIUM FRAMES

Our entire frame is designed to illuminate your advertising message perfectly. Its depth of 170 mm allows light to radiate optimally from the frame. As this system has the same range of sizes as System 50, frames from both product lines can be combined perfectly.



LED modules are built in at the top and bottom of the frames, and they have an integrated power pack.



### EASY CORNECT®

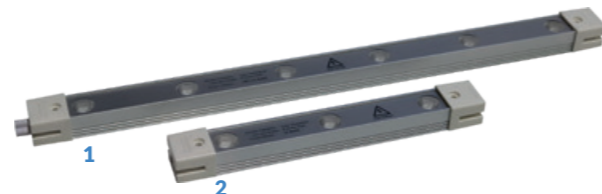


### EASY CORNECT® PLUS



### LED MODULES

The LED modules are fitted flush into the horizontal profiles, which protects them perfectly against damage. An external power pack is not needed, because it is integrated directly into the LED module. Using OSRAM® high power LEDs in combination with special lenses makes for perfect illumination and a long operating life.



### LED MODULES: TECHNICAL DATA

- » Dimensions (1): 495 x 32.4 x 23.3 mm
- » Dimensions (2): 250 x 32.4 x 23.3 mm
- » Modules equipped with OSRAM® high power LEDs
- » Up to 20 LED elements can be connected in series.
- » Performance (1): 18 Watt
- » Performance (2): 9 Watt
- » Protection class: IP60
- » Lightness (1): 1450 lm
- » Lightness (2): 725 lm
- » Light colour: 7000 K
- » Voltage: AC110-220V
- » Service life: > 50.000 h
- » Certificate: CE, RoHS, UL

## FABRIC / TRANSPORT & TOOLS

### FABRIC

VARIANT	WITH UV PRINTING		WITH SUBLIMATION PRINTING	
	ITEM NUMBER	PRICE	ITEM NUMBER	PRICE
Fabric backlighting	CR-17-SUV-HL	59,00 €/m <sup>2</sup>	CR-17-SSB-HL	59,00 €/m <sup>2</sup>
Fabric blackout for single sided lighting	CR-17-SUV-BL	59,00 €/m <sup>2</sup>	CR-17-SSB-BL	59,00 €/m <sup>2</sup>

### UV PRINTING

Digital printing uses inks which coat the surface of the material. This enables it to print on a very wide range of materials. Its advantages over conventional printing are its ability to print widths of over 500 cm, the great variety of materials it can print on, and its high colour density, which is particularly useful for printing backlit banners.



### SUBLIMATION PRINTING

In this printing process, an image is printed in reverse onto sublimation paper and the printed image is then laid on polyester fabric and sublimated into it through heat pressing. The great advantage of this printing process is that the ink does not stay on the fabric's surface but penetrates into its individual fibres. Prints produced by sublimation printing are very robust. The fabric retains its feel, but can be washed and ironed.



### TRANSPORT

VARIANT	ITEM NUMBER	PRICE
Transport box profiles PREMIUM	1	CR-TR-PR06 749,00 €
Transport bag FLEX	2	CR-TR-FL02 245,00 €
Plastic box FLEX	3	CR-TR-FL04 17,00 €
Top cover FLEX	4	CR-TR-FL05 7,00 €
Trolley FLEX	5	CR-TR-FL08 35,00 €
Plastic box FLEX XL	6	CR-TR-FL06 25,00 €
Top cover FLEX XL	7	CR-TR-FL07 9,00 €

### TRANSPORT BOX PROFILES PREMIUM

- » For profiles
- » Lined with foam plastic to protect the profiles
- » Equipped with smoothly running, high-quality rollers

### TOOLS

VARIANT	ITEM NUMBER	PRICE
Allen key for foot element; SW: 3 mm	8	CR-ZU-W6 3,00 €
Allen key for diagonal; SW: 5 mm	9	CR-ZU-W4 3,00 €





# **CORNECT®**

## **Exhibition**

A business unit of  
**Feldmann Metall & Schmiedekunst GmbH**

**Company Management / Product Management: Mühlsteig 25**  
**Sales / Production / Showroom: Mühlsteig 35 a**  
**90579 Langenzenn, Germany**  
**T +49 9101-4977-700, F +49 9101-4977-710**  
**info@cornect-exhibition.com**

**[www.cornect-exhibition.com](http://www.cornect-exhibition.com)**